

Do You Know The ABC's of Skin Cancer?

Check the appearance of any mole or other growth on your skin for the following clues. If any of these describe a mole or growth on your body, it maybe abnormal and should be evaluated by your health care provider.

A is for **Asymmetry** – of one half of does not match the other half.

B is for **Border** – an irregular, scalloped or poorly defined border

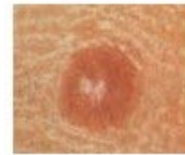
C is for **Color** – If the color or shades of the mole growth is not uniform.

D is for **Diameter** – If the width is greater than 6 millimeters (about the size of a pencil eraser.)

E is for **Evolving**—any change is size, shape, color, elevation or any new symptom including bleeding, itching, or crusting.

Benign

Possibly
Cancerous



Symmetrical

Asymmetrical



Even Edges

Uneven



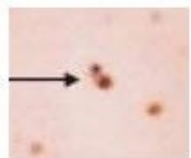
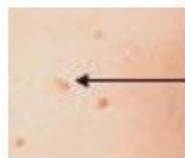
One Shade

Two or more Shades



Smaller than 6mm

Larger than 6mm



*Ordinary
Mole*

*Changing in size,
shape & color*

A FREE Skin Cancer Screening

will be held on **Saturday, May 5th**
at the **Kent County Health Department**
from **9:00 am to 12:00 noon**

To make your appointment Call 410-778-7970
habla en Español 410-778-2358